

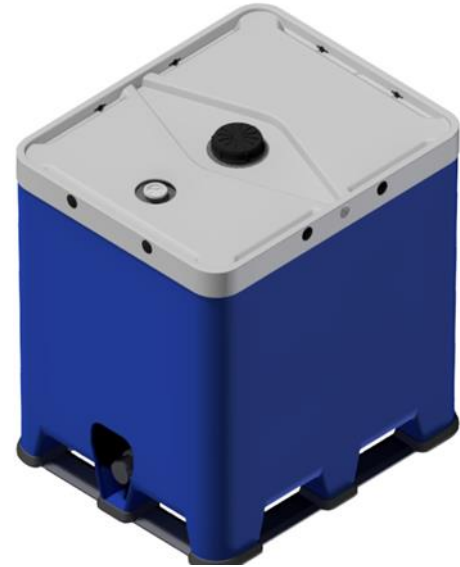
GR IBC

31HH1/Y/.../D/BAM 6968-RIKUTEC/3314/2050/11. Revision

Specification packaging materials data sheet

Technical Data

Nominal volume	ca. 1000 liter / approx. 264 gal.
Outer Diameter	ca. 1200 x 1000 mm / approx. 47.2 x 39.4in.
Total height	ca. 1165 mm / approx. 45.9 in.
Diameter filling opening	1 x S56x4 (option S62 x 5mm)
Weight	ca. 95 kg / approx. 209 lb.



Construction and description

IBC	<ul style="list-style-type: none"> • manufactured by a coextrusion blow moulding process • Outer box material: HD PE • Inner bottle material : HD PE
Design	<ul style="list-style-type: none"> • special designed double safety containment
Bungs	<ul style="list-style-type: none"> • 1 x S62x 5 (option S56x4) air vent cap of HD PE with PTFE laminate • 1 x 160x7 cap of HD PE
	Bodem outlet with HDPE/PP ball valve
Closing torques	corresponding to requirements to dip tube and seal selection

Issued by/on
M. Monzel

Revision status
25. Oct 2018/A